

GE Healthcare

# Vivid E95



Ultrasound. Elevated.

# The Vivid™ E95 is a premium 4D cardiovascular ultrasound system designed to help you rise above some of today's complex healthcare challenges.

## Put your department ahead of the technology curve

By combining the proven breadth and performance of the Vivid product line with the cSound™ powerful, software-based beamformer image reconstruction platform, the Vivid E95 takes 4D ultrasound to a whole new level – potentially helping to reduce non-diagnostic exams and cost of care.

Compared to many conventional scanners, the system acquires more information up front, enabling True Confocal Imaging and Adaptive Contrast Enhancement for robust image quality along with many valuable quantification tools and workflow enhancements.

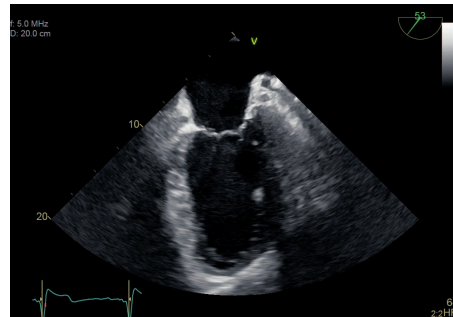
The many ways Vivid E95 with cSound performance elevates patient care:

- Detailed views into cardiac structures to enhance communication between echocardiologists and interventionalists
- Elevated performance in:
  - Near field image quality
  - Lateral wall definition
  - Image uniformity
  - Penetration

## Visualization

### Exceptional 2D and 4D image quality

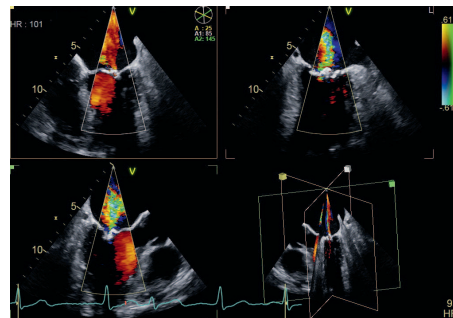
The Vivid E95 quickly brings you quantifiable information with high contrast and spatial resolution – even for patients with body types or conditions that make them difficult to scan. GE's XDclear™ probe technology pairs with our new imaging platform to capture data from every channel in the probe.



**True Confocal Image for TEE** introduces uniform focusing, combined with increased contrast resolution throughout the field of view at high frame rates.



**HDlive™** is an advanced visualization method that simulates light propagation and scattering through tissue.



**Triplane** lets you image three planes from the same heartbeat, with high temporal and spatial resolution.

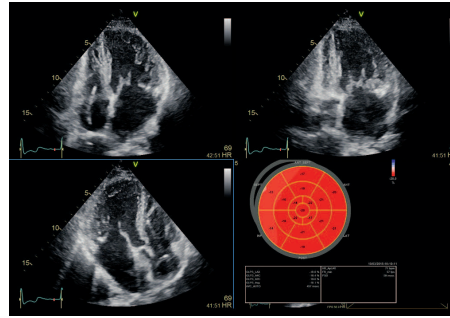


**Virtual Apex** - Phased array probes provide a wide field of view for enhanced visualization of structures at the sides of the sector.

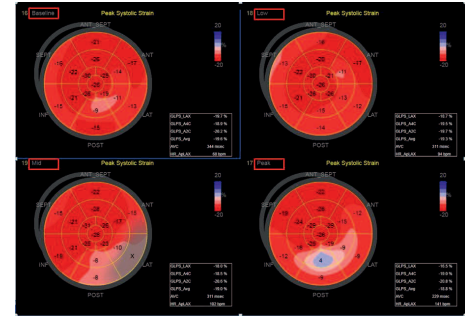
# Quantification

## Define the care path

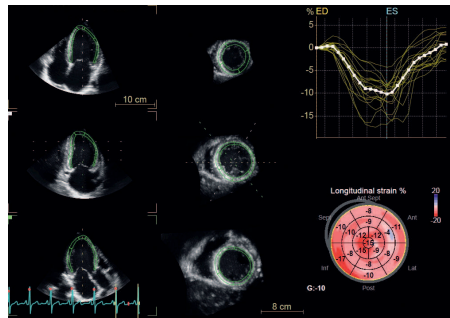
Quantification with Vivid E95 is all about helping providers evaluate and address cardiovascular issues.



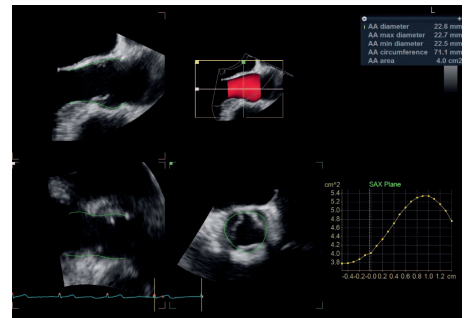
**Automated Function Imaging (AFI)** - Assess and quantify left ventricular wall motion at rest, calculating a large set of parameters.



**AFI Stress** protocols acquire standard apical 2D views and quantify both longitudinal segmental and global strain wall motion assessment at each stress level.



**4D Strain** calculates both global and regional strain values based upon a spatial speckle-tracking algorithm. The information is presented in a strain bull's-eye plot.



**4D Auto AVQ** automatically segments, aligns and quantifies the aortic outflow tract – vital to device sizing and orientation for TAVI/TAVR procedures.

# Workflow

## Streamlining your exams

Vivid E95 with cSound performance makes 4D imaging as easy as 2D imaging with efficient and intuitive tools. The high-quality DICOM® adapts to your preferences in terms of resolution and gray scale. You'll also appreciate the simple, tablet-like experience of the new configurable touch panel with an Image Manager for quick and easy access to patient images.

## 4D TEE

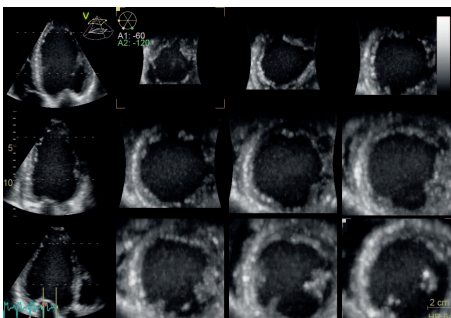
With TEE procedures growing, so is the need to find ways to achieve the benefits of 4D imaging without compromising productivity.

Powered by cSound, 4D TEE is simple, quick and clear on the Vivid E95. View precise images of the heart during assessment and diagnosis in the echo lab. Confidently steer image-guided procedures in the cath lab. Support invasive surgical procedures in the OR.

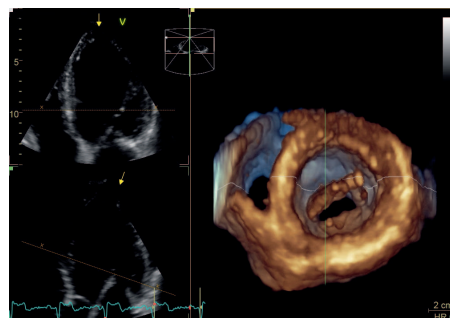
# Ergonomics

## A familiar, yet modern and efficient package

- 22" high-resolution OLED monitor
- 12" LCD touch screen
- Adjustable floating keyboard
- Convenient data management
- Easy mobility
- Low power consumption with efficient and low noise cooling



**Multi-slice imaging**, available in live or replay, helps the user extract conventional long-axis and short-axis views from 4D volume data sets.



**Laser Lines** enhances your depth perception by clearly showing the 2D-4D relationship as two lines superimposed on a volume rendering that reflects the two planes extracted from the original 4D volume.



## About GE Healthcare

GE Healthcare provides transformational medical technologies and services to meet the demand for increased access, enhanced quality and more affordable healthcare around the world. GE (NYSE: GE) works on things that matter - great people and technologies taking on tough challenges. From medical imaging, software & IT, patient monitoring and diagnostics to drug discovery, biopharmaceutical manufacturing technologies and performance improvement solutions, GE Healthcare helps medical professionals deliver great healthcare to their patients.

## Imagination at work

GE Healthcare GmbH  
Beethovenstr. 239  
42655 Solingen, Germany  
T +49 212-28 02-0  
F +49 212-28 02-28  
[www.gehealthcare.com](http://www.gehealthcare.com)

**UNITED KINGDOM**  
GE Healthcare  
Pollards Wood  
Nightingale Lane  
Chalfont St Giles  
Buckinghamshire, HP8 4SP  
T +44 1494 544000

**AMERICAS**  
GE Healthcare  
9900 West Innovation Drive  
Wauwatosa, WI 53226  
U.S.A.  
T +1 888 202 5582

©2015 General Electric Company - All rights reserved.

General Electric Company reserves the right to make changes in specifications and features shown herein, or discontinue the product described at any time without notice or obligation. This does not constitute a representation or warranty or documentation regarding the product or service featured. The results expressed in this document may not be applicable to a particular site or installation and individual results may vary. This document and its contents are provided to you for informational purposes only and do not constitute a representation, warranty or performance guarantee from GE Healthcare.

GE, the GE Monogram, imagination at work, cSound, HD*live*, Vivid, and XDclear are trademarks of General Electric Company or one of its subsidiaries.

DICOM is the registered trademark of the National Electrical Manufacturers Association for its standards publications relating to digital communications of medical information. Third party trademarks are the property of their respective owners.

All third party trademarks are the property of their respective owners.

GE Medical Systems Ultrasound & Primary Care Diagnostics, LLC, a General Electric Company, doing business as GE Healthcare.

JB31159XX 299-15-U002E